

POSTAGE

Printed by the National Bank Note Co.

1869



Horseman

2 C

BROWN

(113)



Washington

6 C

ULTRAMARINE

(115)

Coat of Arms

10 C

YELLOW

(116)

Steamship

12 C

GREEN

(117)

*Landing of
Columbus*

15 C

BROWN
AND BLUE

(118)



*Declaration of
Independence*

24 C

GREEN
AND VIOLET

(120)

Coat of Arms

30 C

BLUE AND
CARMINE

(121)

Lincoln

90 C

CARMINE
AND BLACK

(122)

POSTAGE

Printed by the American Bank Note Co.

1879

Soft Porous Paper



1882



1882

Designs of Issue of 1873 Re-engraved



1883



1887



POSTAGE

Printed by the American Bank Note Co.

Columbian Exposition Issue

1893



*Columbus Welcomed
at Barcelona*
6 C
PURPLE
(235)



*Columbus Announcing
His Discovery*
10 C
DARK GREEN
(238)



Isabella Pledging Her Jewels
\$ 1
SALMON
(241)

Columbus in Chains
\$ 2
BROWN RED
(242)

*Columbus Describing
His Third Voyage*
\$ 3
YELLOW GREEN
(243)

*Portraits of
Columbus and Isabella*
\$ 4
CRIMSON LAKE
(244)

Profile of Columbus
\$ 5
BLACK
(245)

POSTAGE

Trans-Mississippi Exposition Issue

Watermarked USPS

1898

On the Mississippi
1 C
YELLOW GREEN
53
(20)

Farming in the West
2 C
COPPER RED
(201)



Trough Crossing Train
8 C
VIOLET BROWN
53 6.50
(20)



Western Mining Prospector
50 C
SAGE GREEN
139 8/10
(201)

Western Cattle in Storm
\$1
BLACK
39 22.50
(202)

Mississippi River Bridge
\$2
ORANGE BROWN
(203)

Pan-American Exposition Issue

1901

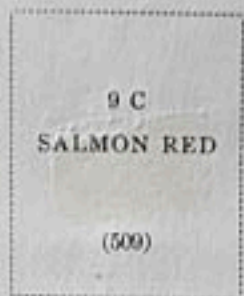
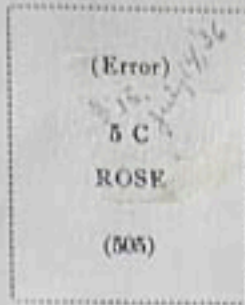


POSTAGE

Unwatermarked

1917-19

Perforated 11



Edison Commemorative Issue

Flat Plate Printing
Perforated 11



Rotary Press Printing
Perforated 11x10½



Rotary Press Coll Stamp
Perforated 10 Vertically



Flat Plate Printing
Perforated 11

Sullivan Expedition Issue



Rotary Press Printing
Perforated 11x10½



SPECIAL PRINT

1935



TO THE AMERICAN PHILATELIC SOCIETY
DEPARTMENT, BUREAU OF ENGRAVING AND PRINTING



OF PROGRESS

UNDER AUTHORITY

IN COMPLIANCE WITH THE AMERICAN PHILATELIC SOCIETY

DEPARTMENT OF ENGRAVING AND PRINTING



EXHIBITION TO THE NATIONAL STAMP EXHIBITION OF 1934

N.Y., FEBRUARY 10-18, 1934
PLATE NUMBER 21184

UNDER AUTHORITY OF JAMES A. FARLEY, POSTMASTER GENERAL



IN COMPLIANCE WITH THE NATIONAL STAMP EXHIBITION



PRINTED BY THE TREASURY DEPARTMENT, BUREAU OF ENGRAVING AND PRINTING

OMAHA, NEBRASKA, OCTOBER 1934
PLATE NUMBER 213

UNDER AUTHORITY OF JAMES A. FARLEY, POSTMASTER GENERAL

DEPARTMENT OF THE TREASURY, BUREAU OF ENGRAVING AND PRINTING



TO THE AMERICAN PHILATELIC SOCIETY, CONVENTION AND EXHIBITION.

PRINTED BY THE TREASURY DEPARTMENT, BUREAU OF ENGRAVING AND PRINTING

ATLANTIC CITY, NEW JERSEY, AUGUST 1934.
PLATE NUMBER 21303

ATLANTIC CITY, NEW JERSEY, AUGUST 1934.
PLATE NUMBER 21303



HUNTING PERMIT STAMPS

Department of the Interior

1942

Baldpate

01
VIOLET BROWN

(RW9)



1943



1940



1947



1948



OFFICIAL

Printed by the Continental Bank Note Co.

1873

Department of Agriculture



12 C YELLOW (1505)	15 C YELLOW (1506)	24 C YELLOW (1507)	30 C YELLOW (1508)
------------------------------	------------------------------	------------------------------	------------------------------

Executive Department

Name of Department above 1 C CARMINE (1509)	2 C CARMINE (1510)		6 C CARMINE (1512)	10 C CARMINE (1513)
---	------------------------------	--	------------------------------	-------------------------------

Department of the Interior



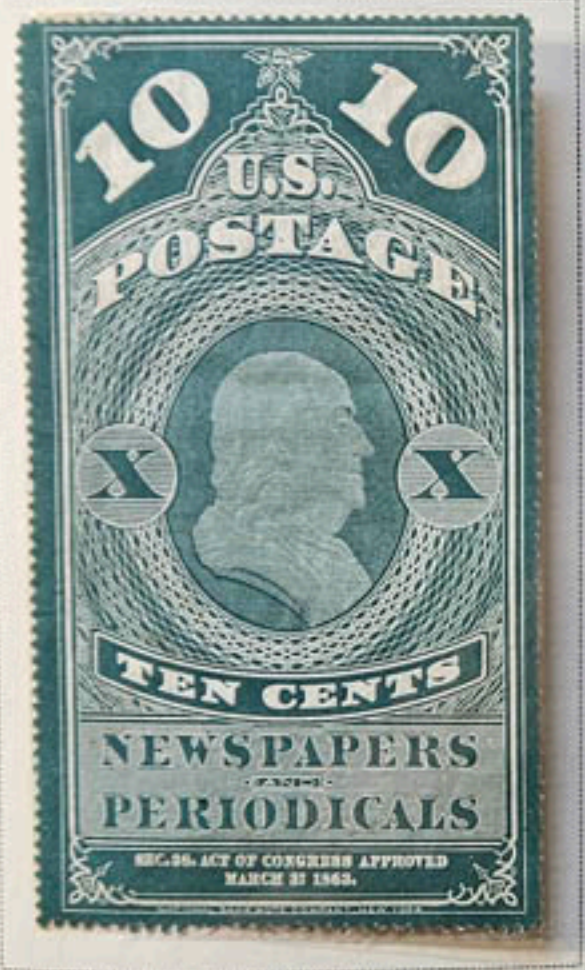
NEWSPAPERS AND PERIODICALS

Printed by the National Bank Note Co.

1865



M
(PR1)

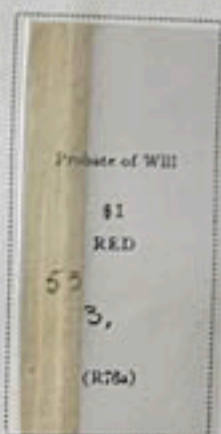
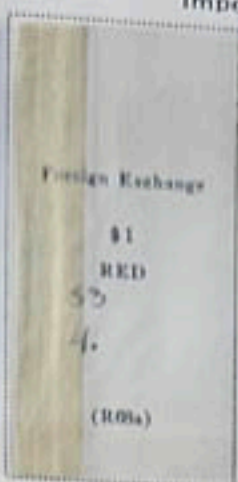


REVENUE

First Issue

1862-71

Imperforate

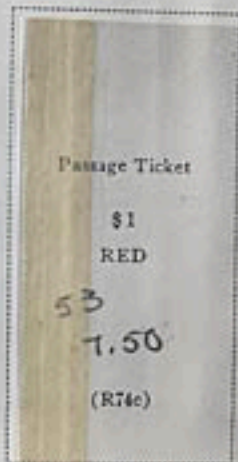


REVENUE

First Issue

1862-71

Perforated



CANAL ZONE

Watermarked USPS

1904



Unwatermarked

Perforated 11

1924-25



1926



CANAL ZONE

1937

Unwatermarked

Perforated 11



1939



PHILIPPINES

1899

Unwatermarked

United States
Stamp of 1894
Surcharged
PHILIPPINES
50 C
ORANGE
(212)

1899

Watermarked USPS



Type II
10 C
ORANGE
BROWN
'57 1.35
(217a)

50 C
ORANGE
37
84
(219)

1901

From Col. H.R.
Green collection



Type I
\$1
BLACK
'37 16.50
(223)

Type II
\$1
BLACK
(223a)

\$2
DARK BLUE
'37 17
(224)

\$5
DARK GREEN
March '45
p. 60.
(225)

1903-04



50 C
ORANGE
'57 1.35
(230)

\$1
BLACK
March '45
#24
(237)

\$2
DEEP BLUE
March '45
#35
(238)

\$5
DARK GREEN
(239)

From Col. H.R. Green Collection

