



*Herseman*

2 C

BROWN

(113)



*Washington*

6 C

ULTRAMARINE

(115)

*Coat of Arms*

10 C

YELLOW

(116)

*Steamship*

12 C

GREEN

(117)

*Landing of  
Columbus*

15 C

BROWN  
AND BLUE

(118)





1882



1882

Designs of Issue of 1873 Re-engraved



1883

1887

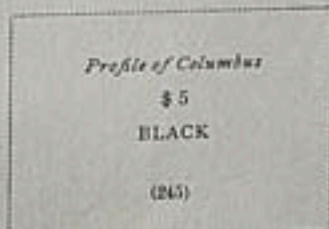
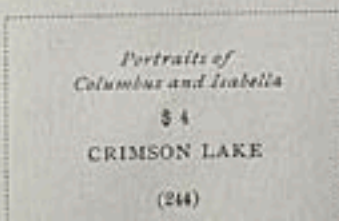
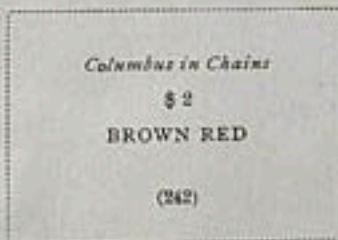
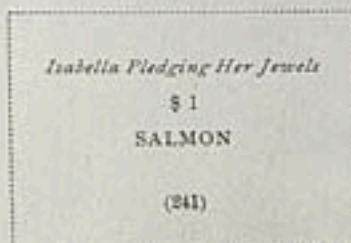
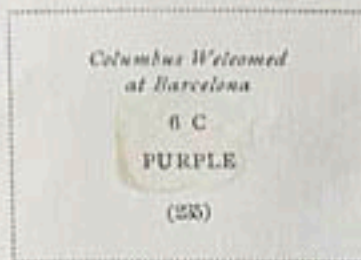


# POSTAGE

Printed by the American Bank Note Co.

Columbian Exposition Issue

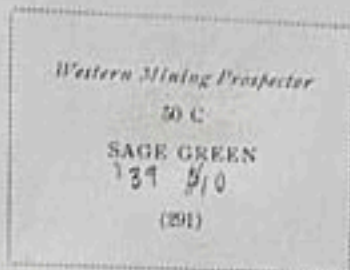
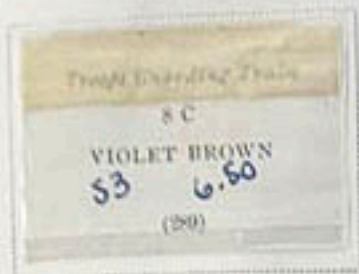
1893



# Trans-Mississippi Exposition Issue

Watermarked USPS

1898



# Pan-American Exposition Issue

1901



Unwatermarked

1917-19

Perforated 11



(Error)  
5 C  
ROSE  
(505)

6 C  
RED ORANGE  
(506)



9 C  
SALMON RED  
(509)



15 C  
GRAY  
(514)

20 C  
DEEP  
ULTRAMARINE  
(515)



50 C  
LIGHT  
VIOLET  
(517)



Perforated 11



Perforated 11x10½



Rotary Press Coll Stamp  
Perforated 10 Vertically



Flat Plate Printing

Perforated 11

Sullivan Expedition Issue



Rotary Press Printing

Perforated 11x10½





TO THE AMERICAN PHILATELIC SOCIETY BY  
 PARTMENT, BUREAU OF ENGRAVING AND PRINTING



OF PROGRESS  
 UNDER AUTHORITY  
 IN COMPLIMENT TO THE AMERICAN PHILATELIC SOCIETY  
 BY THE BUREAU OF ENGRAVING AND PRINTING



IN COMPLIMENT TO THE  
 EXHIBITION OF 1934

N.Y., FEBRUARY 10-18, 1934  
 PLATE NUMBER 21184

UNDER AUTHORITY OF  
 JAMES A. FARLEY, POSTMASTER GENERAL



IN COMPLIMENT TO THE  
 NATIONAL STAMP EXHIBITION



PRINTED BY THE TREASURY DEPARTMENT,  
 BUREAU OF ENGRAVING AND PRINTING

OMAHA, NEBRASKA, OCTOBER 1934  
 PLATE NUMBER 213

UNDER AUTHORITY OF  
 JAMES A. FARLEY, POSTMASTER GENERAL



PRINTED BY THE TREASURY DEPARTMENT,  
 BUREAU OF ENGRAVING AND PRINTING



TO THE AMERICAN PHILATELIC SOCIETY,  
 CONVENTION AND EXHIBITION.

PRINTED BY THE TREASURY DEPARTMENT,  
 BUREAU OF ENGRAVING AND PRINTING

ATLANTIC CITY, NEW JERSEY, AUGUST 1934.  
 PLATE NUMBER 21303

ATLANTIC CITY, NEW JERSEY, AUGUST 1934.  
 PLATE NUMBER 21303





# HUNTING PERMIT STAMPS

Department of the Interior

1942

*Baldpate*  
\$1  
VIOLET BROWN

(RW9)



1945



1946



1947



1948



Department of Agriculture



19 C YELLOW  (1505)	15 C YELLOW  (1500)	24 C YELLOW  (1507)	30 C YELLOW  (1508)
------------------------------	------------------------------	------------------------------	------------------------------

Executive Department

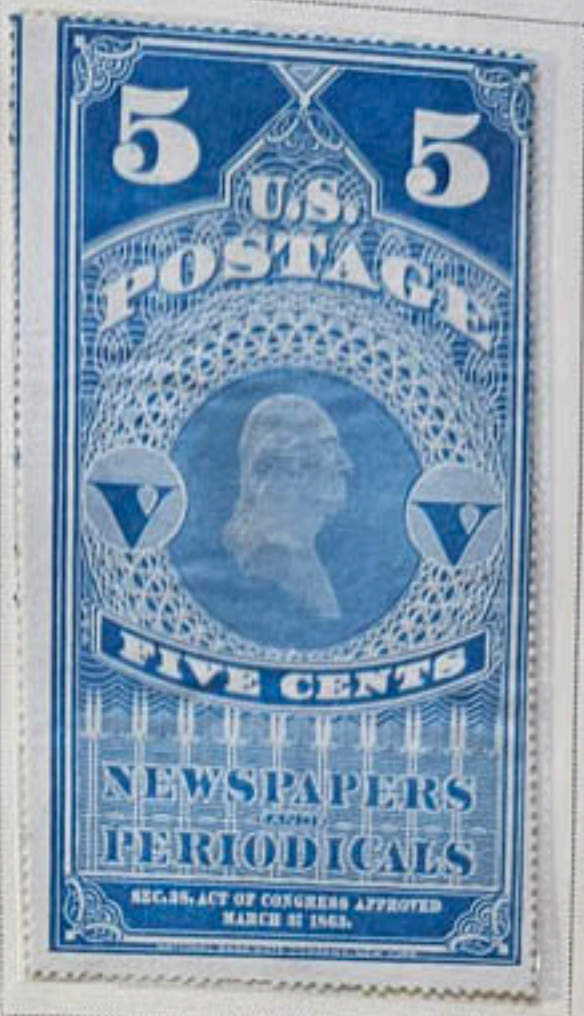
Name of Department above 1 C CARMINE  (1500)	2 C CARMINE  (1510)		6 C CARMINE  (1512)	10 C CARMINE  (1513)
---	------------------------------	--	------------------------------	-------------------------------

Department of the Interior





M  
(PR1)



First Issue  
1862-71  
Imperforate



First Issue  
1862-71  
Perforated



Mortgage  
\$1  
RED  
  
(R73c)

Passage Ticket  
\$1  
RED  
53  
7.50  
  
(R74c)



1904



Unwatermarked

Perforated 11

1924-25



\$1  
VIOLET BROWN  
34 C.50  
(80)



50 C  
LILAC  
(94)

\$1  
VIOLET BROWN  
1431 3.75  
(106)

1926



# CANAL ZONE

1937

Unwatermarked

Perforated 11



1939



1899  
Unwatermarked

United States  
Stamp of 1894  
Surcharged  
**PHILIPPINES**  
50 C  
ORANGE  
(212)

1899  
Watermarked USPS

			
	Type II 10 C ORANGE BROWN '57 1-35 (217a)		50 C ORANGE '37 '84 (219)

1901

			Type I \$1 BLACK '37 16.50 (223)	Type II \$1 BLACK (223a)	\$2 DARK BLUE '37 '17 (224)	\$5 DARK GREEN March '45 #60 (225)
--	---	---	--	-----------------------------------	---	--

*From Col. H.R. Green Collection*

1903-04

						
			50 C ORANGE '57 (230)	\$1 BLACK March '45 #24 (237)	\$2 DEEP BLUE March '45 #35 (238)	\$5 DARK GREEN (239)

*From Col. H.R. Green Collection*

